

GSSM and GSS series

The GSSM and GSS gas filter housing are made of electronic grade stainless steel and designed for gas filtration at high temperature and pressure in semiconductor processes. The filters feature high flow rates, low pressure drop and excellent chemical compatibility.

Applications

Compressed air, process gas, toxic gas, dry gas, dewatering

| ITEM | SPECIFICATIONS |
|--------------------|------------------------------------|
| Filter Media | Hydrophobic PTFE |
| Housing | 316L stainless steel |
| Support | PFA |
| Max. Working Temp. | 170°C |
| Max. Operating DP | Forward 0.55 Mpa, Reverse 0.34 Mpa |



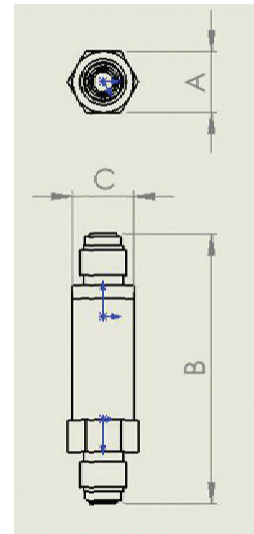
Ordering Information

| Code | Removal Rating | Inlet & Outlet | Length | |
|---------------|----------------|----------------|---|--------|
| ESPRO-12-GSSM | 300 | VMM4 | | |
| ESPRO-12-GSSM | 300 | 0.0030 µm | VMM4 1/4" Gasket Seal(VCR).Male/Male | 84 mm |
| | 150 | 0.0015 µm | SMM4 1/4" Compression Seal(Swagelok).Male inlet/outlet | 73 mm |
| | | | VFM4 1/4" Gasket Seal(VCR).Female inlet/Male outlet | 88 mm |
| | | | VMF4 1/4" Gasket Seal(VCR).Male inlet/Female outlet | 100 mm |
| ESPRO-12-GSS | 300 | 0.0030 µm | VMM4 1/4" Gasket Seal (VCR or Compatible) Male/Male | 141 mm |
| | 150 | 0.0015 µm | VMM8 3/8" Gasket Seal (VCR or Compatible) Male/Male | 148 mm |
| | | | VFM4 1/4" Gasket Seal (VCR or Compatible) Female/Male | 148 mm |
| | | | VFM4 1/4" Compression Seal (Swagelok or Compatible) Male/Male | 141 mm |
| | | | SMM8 3/8" Compression Seal (Swagelok or Compatible) Male/Male | 147 mm |
| | | | SMM2 1/2" Compression Seal (Swagelok or Compatible) Male/Male | 111 mm |
| | | | NF4 1/4" Female NPT | 132 mm |



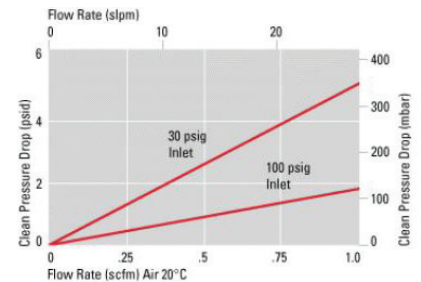
GSSM & PALL Mini-Gaskleen® 3000 Series comparison

| COMPARISON TABLE | | | |
|----------------------------|---|---|---|
| Brand | PALL | esPRO® BY DEEFINE | |
| Series | Mini-Gaskleen® 3000 Series | GSSM Series | |
| Type | Gas filter | Gas filter | |
| Pore size | 0.003 µm | 0.003 µm | |
| Material | Filter medium | PTFE | PTFE |
| | Housing | Electropolished 316L stainless steel housing 20 in Ra internal surface finish | Electropolished 316L stainless steel housing 20 in Ra internal surface finish |
| | Core | PFA | PFA |
| | O-ring | Teflon encapsulated Viton/TEV | Teflon encapsulated Viton/TEV |
| Connections | Diameter | 22 mm | 22 mm |
| | Inlet&Outlet | 1/4" Gasket Steel (VCR) Male/Male | 1/4" Gasket Steel (VCR) Male/Male |
| | Length | 84 mm | 84 mm |
| Max. Operating DP | Forward 5.5 bar @ 120°C Reverse 3.4 bar @ 21°C | Forward 0.55 Mpa, Reverse 0.34 Mpa | |
| Max. Operating Temperature | / | 90°C | |



Pressure Drop vs. Gas Flow Rate

1) Pall Mini-Gaskleen® 3000 Series



2) GSSM Series

